

# West Virginia Nursing Educational Mobility and Articulation Model

2011



West Virginia Center for Nursing  
1018 Kanawha Boulevard, East  
Charleston, West Virginia 25301

Phone: 1.304.558.0838

Fax: 1.304.558.0056

Website: <http://www.wvcenterfornursing.org>

## West Virginia Nursing Educational Mobility and Articulation Model 2011

### Philosophy

*Educational articulation allows for horizontal and vertical mobility for the student from one type and/or level of nursing education program to another.*

### Definition of Articulation

*Articulation is a process through which academic programs facilitate educational progress with minimal loss of credit or duplication of knowledge and skills.*

### Goals

- *Enhance the skills of the healthcare workforce to meet the increasingly complex healthcare needs of the citizens of West Virginia.*
- *Facilitate educational mobility of nursing students and the nursing workforce in West Virginia.*
- *Increase nursing workforce supply in West Virginia.*

### Assumptions

There is a common core of knowledge, attitudes and skills that graduates of all nursing programs should acquire; however there are differences in the breadth, depth, and scope of preparation for each type of graduate. Clinical experiences at each level contribute to the overall knowledge base of graduates at all levels of education. Placements for clinical education rely on communities to share their resources including facilities, staff expertise and other services with nursing students and programs.

We recognize that not every individual wishes to seek credentials at the next practice level, but the opportunity for academic progression should be available for those who wish to do so.

### Implementation Standards

- The West Virginia Board of Examiners for Registered Professional Nurses or West Virginia Board of Examiners for Licensed Practical Nurses set standards for initial licensure and education programs preparing students for licensure. Additional standards are set by national and regional accrediting bodies.
- Each school has autonomy to set admission, progression, and graduation requirements for their nursing programs to meet standards.

- All nursing graduates meet program and curriculum standards for the school from which they graduate.
- Nursing programs must be provided adequate resources, including but not limited to adequate faculty numbers and education, financial resources (salaries, support, and equipment), support staff, and clinical/laboratory/classroom facilities to support nursing programs and ensure quality outcomes.

### Articulation Elements

Nursing education programs participating in the West Virginia Nursing Educational Mobility and Articulation Model agree to the following:

- Non-nursing credits from regionally accredited institutions of higher learning may be transferred, subject to individual college/university policies.
- Non-nursing credits from non-regionally accredited institutions of higher learning may not be transferable.
- The number of nursing semester credit hours that are allowed for transfer between programs, and the number of nursing semester credit hours that will be required to be completed in a nursing program are determined by each institution.

### General Expectations of all students

- Students must meet the admission requirements of the nursing program at the university, college, school or technical program where they wish to matriculate.
- Students must meet the established pre-requisite and general education core requirements of their program.
- Students who are enrolled in a nursing program where licensure is required must maintain an unencumbered license during enrollment.

### Educational Mobility Options in West Virginia

Opportunities exist in West Virginia for mobility between similar programs, as well as for increasing skill and scope levels through advanced education programs.

- *Mobility between like programs:* The WV Center for Nursing maintains a database of admission requirements and curricular requirements for all nursing programs in the state of WV. The Center attempts to maintain this database with current information provided by the schools and programs. If a student wishes to transfer from one program to a similar program in the state (ex. transfer from one LPN program to another, transfer from one Associate degree program to another, etc), the WV Center for Nursing staff can assist students in looking for similar programs in the state. This

may help students narrow their application possibilities to those programs most similar to the one in which they are currently enrolled. Each school has autonomy to set admission, progression, and graduation requirements for their nursing programs to meet standards.

Please contact the Center at 304-558-0838 for further information on this service.

*Mobility for increasing skill and scope:* Figure 1 demonstrates pathways for educational mobility available in WV. Click on each level, and all programs which offer these opportunities will be highlighted.

## Pathways for Educational Mobility in Nursing in West Virginia

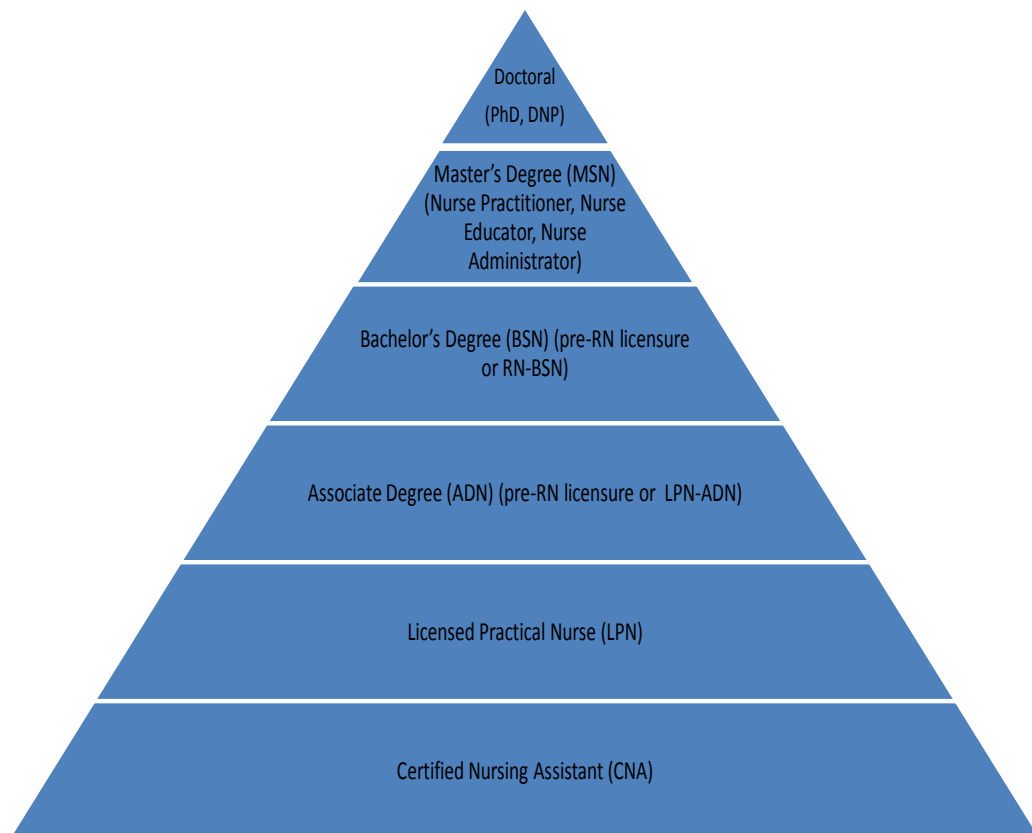
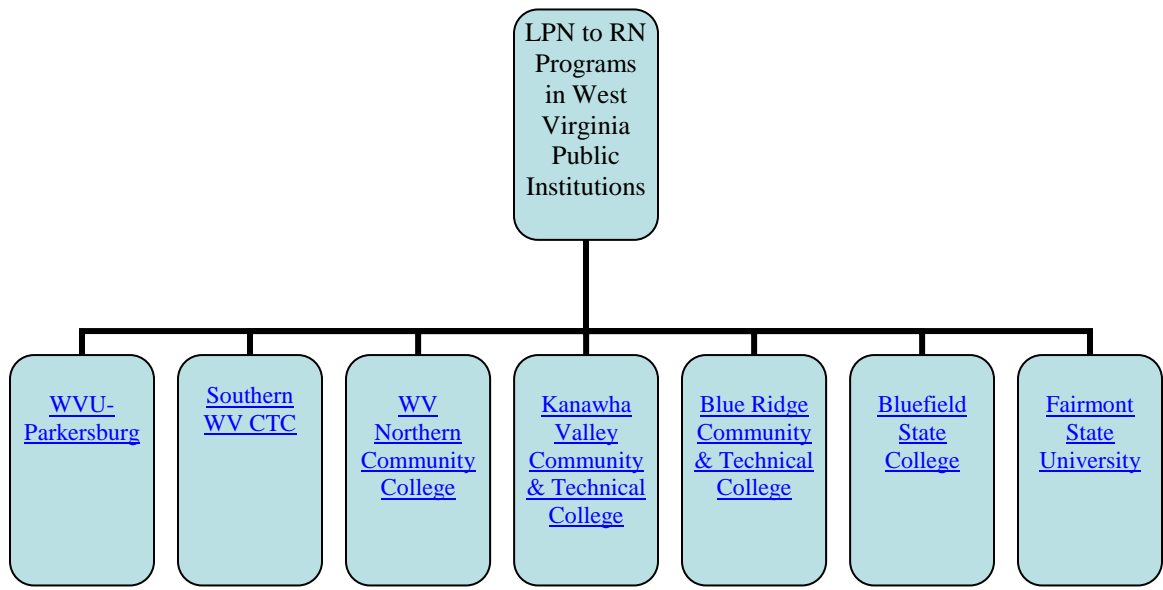


Figure 1: Pathways for educational mobility in nursing in West Virginia

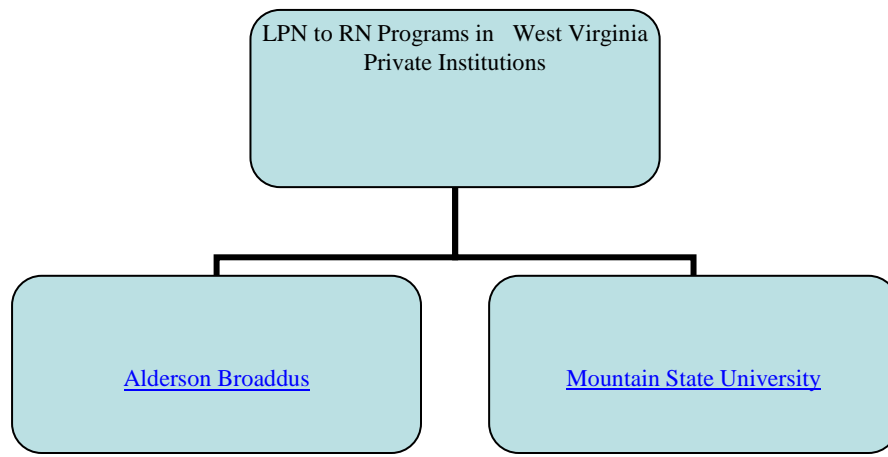
Additional links to admission criteria and curricula for each type of program listed above, in both public and private West Virginia institutions can be found by clicking on the figures below.

\*Note you may press Ctrl and click the school name using your mouse to be taken to the webpage of the program.

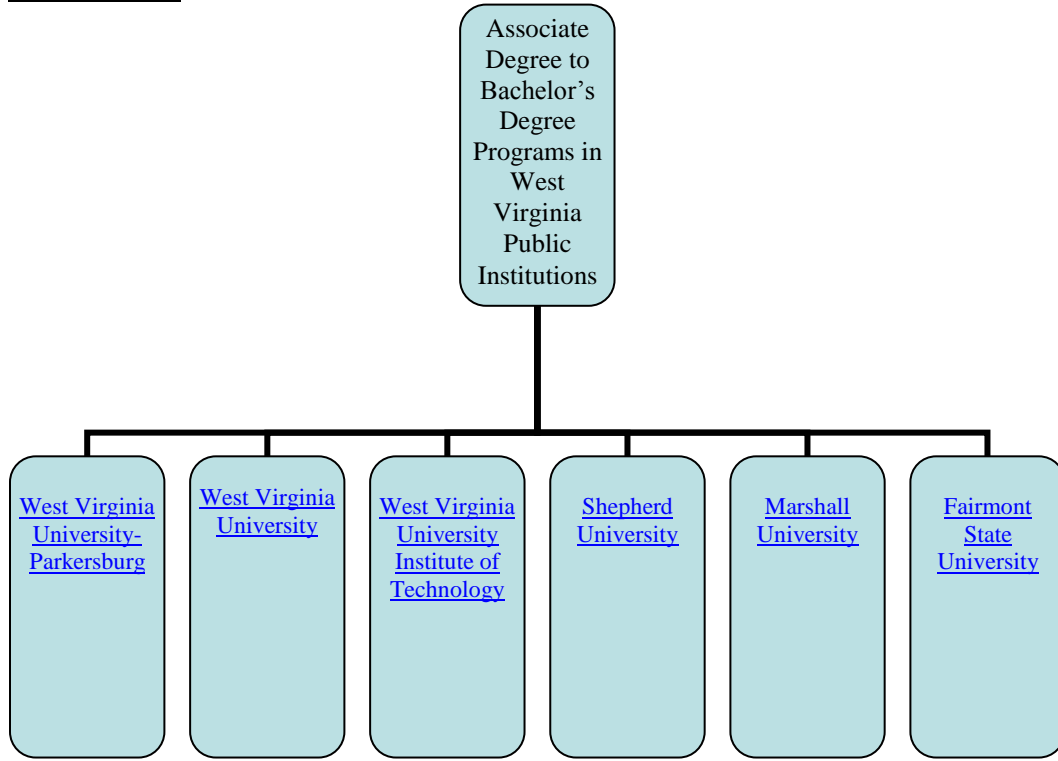
### **LPN to RN: Public Institutions**



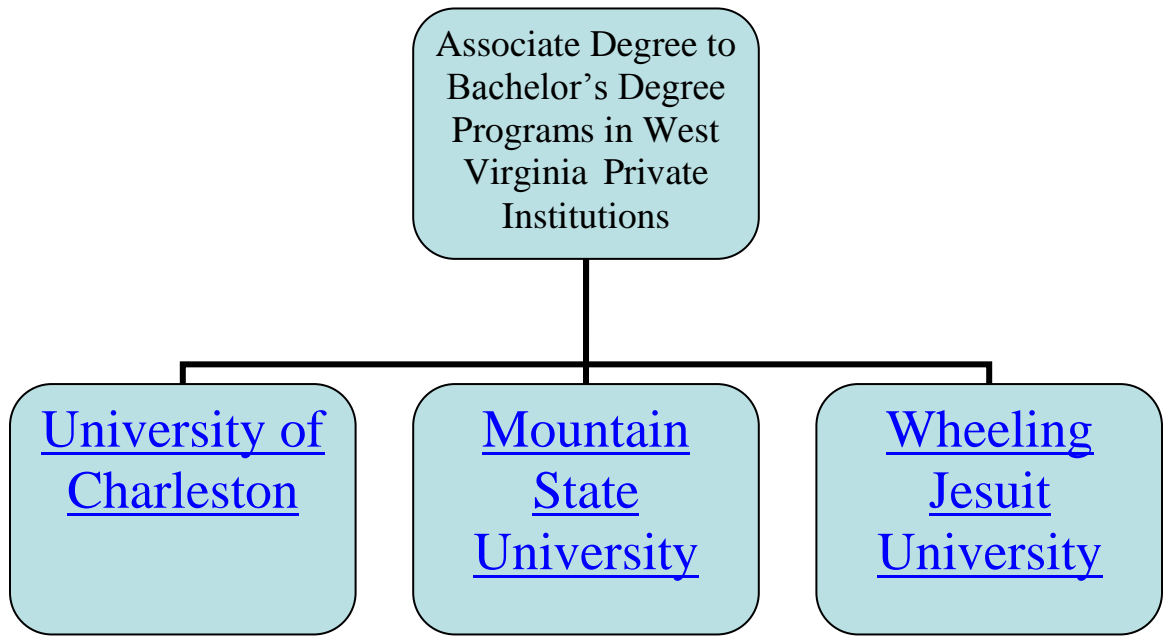
### **LPN to RN: Private Institutions**



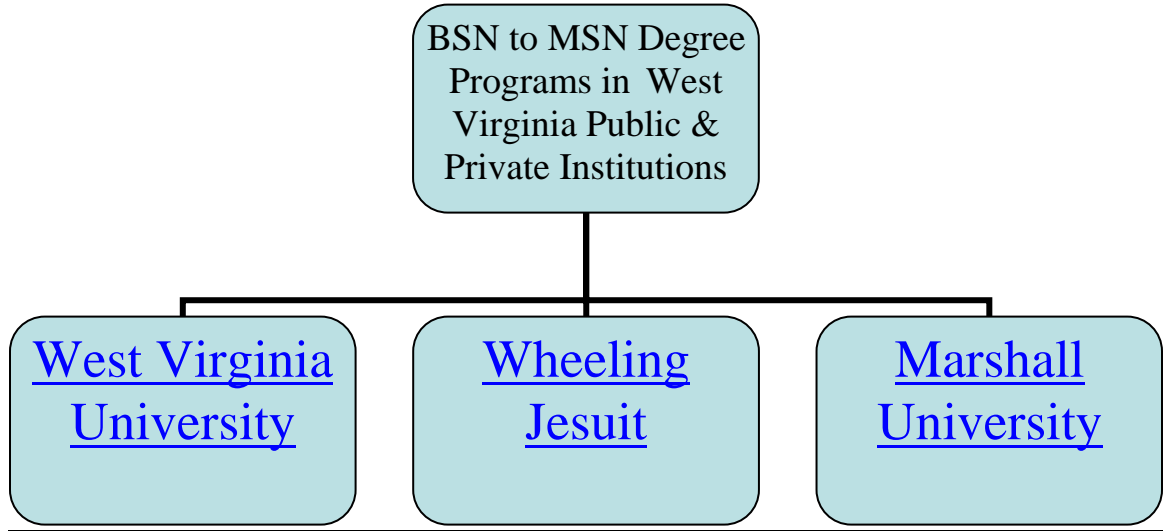
**Associate Degree to Bachelor's Degree (RN-BSN): WV Public Institutions**



**Associate Degree to Bachelor's Degree (RN-BSN): WV Private Institutions**



**BSN to MSN: WV Public and Private Institutions**



**MSN to Doctoral: WV Public and Private Institutions (with doctoral degree type)**

